

Outstanding teaching, learning and assessment

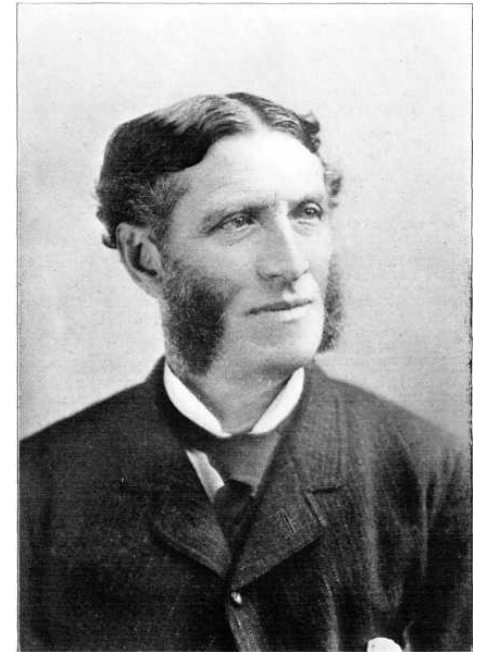
Key messages from Ofsted

Steven Tucker

Her Majesty's Inspector

21 June 2016

With aching hands and bleeding feet
We dig and heap, lay stone on stone;
We bear the burden and the heat
Of the long day, and wish 'twere done.
Not till the hours of light return,
All we have built as we discern.



Teaching, learning and assessment in inspections
this year

Inspection outcomes so far this year

Hot topics

Creating an environment for outstanding teaching, learning and assessment

- Nurturing talent
- HMCI's annual report 2015 identified a common characteristic of teaching, learning and assessment in good and better providers:
 - *A curriculum that supported the local economy and benefited learners.*

Inspection findings: leadership of outstanding teaching, learning and assessment

- Leaders set high expectations for continuous quality improvement, and a culture in which this can be achieved.
- Employers, partners and/or subcontractors are closely involved in developing programmes.
- Leaders have a strong focus on supporting the most vulnerable and disadvantaged learners to achieve.

Inspection findings: features of outstanding teaching, learning and assessment (1)

- Teachers inspire learners through their excellent **knowledge** of the subject and, where relevant, current industry **practice**. They are respected by employers in their sector.
- The tasks teachers set **challenge** learners, of all abilities, to produce their best possible work.
- Teachers **plan** learning activities that develop the confidence and social skills learners need for work and their daily lives.

Inspection findings: features of outstanding teaching, learning and assessment (2)

- Staff provide effective support for individuals, based on a **precise identification** of learners' skills, aptitude and knowledge on entry (leading to).....
- Learners are set clear **targets** and their progress towards these is closely monitored; they make **rapid progress** towards achievement.
- Teachers provide **feedback** on assessment that helps learners to improve their work, skills or knowledge.
- Learners develop skills that are **highly valued by employers.**

Inspection outcomes between 1 September 2015 and 31 May 2016 (full inspections only – 210 providers)



Overall effectiveness



Quality of teaching, learning and assessment



Personal development, behaviour and welfare



■ % Outstanding ■ % Good ■ % Requires improvement ■ % Inadequate

Two surveys published in 2015/16

- Apprenticeships: developing skills for future prosperity.
- Moving forward? How well the further education and skills sector is preparing young people with high needs for adult life.

Hot topics

- Surveys of study programmes and Prevent.
- Ofsted and the White paper 'Educational Excellence Everywhere':
 - focus on under performance/proportionality
 - consultation on the grade for teaching, learning and assessment.

End

